

WI 13699 V2	Platform: BEITHR	Form Factor: ITRAY	Config Type: TLA	KEY
Description: (8) MEMORY DIMM 0-7				Asset Tag Memory
Scan ASSET TAG.				
<p>(IF MEMORY has two barcodes ask for WI AID 5506)</p> <ol style="list-style-type: none"> <li>Handle MEMORY with 2-HANDS by both ends at all times.</li> <li>Scan first memory barcode once and install to DIMM #0.</li> <li>Verify KEY before inserting.</li> </ol>				
<p>NOTE: KEY ON MEMORY MUST ALIGN WITH KEY ON DIMM SLOT OF MOBO</p>				
<ol style="list-style-type: none"> <li>Install rest of (7) MEMORY by inserting GOLD FINGERS into each DIMM slot.</li> <li>Push down evenly with both hands until locked.</li> </ol>				
<b>REQUIREMENTS</b> 				<b>GENERAL</b> <ul style="list-style-type: none"> <li>Handle all components with care and if there is any damage contact the Tech 2 or Lead</li> <li>High attention to detail required</li> </ul>
<b>PRE-OPERATION QA</b> Verify all parts are not damaged.				<b>REQUIRED TOOLS</b> Scanner
<b>IN-OPERATION QA</b> Verify slots don't get damaged when removing memory.				
<b>POST-OPERATION QA</b> Verify all parts are in the correct bin.				

WI 17	Platform: Z	Form Factor: NRACK	Config Type: TLA	KEY
Description: CTO CABLE ASSEMBLY				Fiber Cables Coupler Panels Shuffle Fiber Cables
PG 5 OF 7				
<b>ATTENTION</b> <ol style="list-style-type: none"> <li>Inspect cables for any damage and handle cables with care.</li> <li>Refer to schematic to verify correct cable placement and cable GPN.</li> <li>Verify bend radius for cables is of 1", do not bend less than that.</li> <li>Verify cables are held in line with cable managers.</li> <li>Verify white dots on fiber cables are all facing same side.</li> <li>Connect cable one at a time.</li> <li>Verify fiber cables are routed on top of cable manager.</li> </ol>				
<ol style="list-style-type: none"> <li>Connect FIBER CABLES from bundle into correct CIRCULATOR.</li> <li>Secure CABLES on each CIRCULATOR with Nylon Velcro.</li> <li>Neatly route CABLES down left and right cable managers and secure with Nylon Velcro.</li> </ol>				
<ol style="list-style-type: none"> <li>Remove optic cover from optical module.</li> <li>Connect CABLE connectors into correct module.</li> <li>Secure each set of CABLE with Nylon Velcro.</li> <li>Neatly route CABLE to left and right cable manager and secure with 15" Velcro straps.</li> </ol>				
<ol style="list-style-type: none"> <li>Loosen captive screws from COUPLER PANELS.</li> <li>Carefully pull (1) PANEL out and apply (3) piece of Nylon VELCRO to middle back slot.</li> </ol>				
<ol style="list-style-type: none"> <li>Insert SHUFFLE FIBER CABLES 1-16 port bundle through front right side of coupler.</li> <li>Carefully split bundle and route R1 CABLES to left and R2 CABLES to right around tray pegs.</li> <li>Carefully place CABLES to side.</li> </ol>				
<b>REQUIREMENTS</b> 				<b>GENERAL</b> <ul style="list-style-type: none"> <li>Critical to Quality Station (CTQ)</li> <li>High attention to detail required</li> <li>Handle all components with care and if there is any damage contact the Tech 2 or Lead</li> </ul>
<b>PRE-OPERATION QA</b> Verify all materials and/or parts are not damaged and available for assembly.				
<b>IN-OPERATION QA</b> Verify all parts are secure.				
<b>POST-OPERATION QA</b> Verify all parts are secure.				

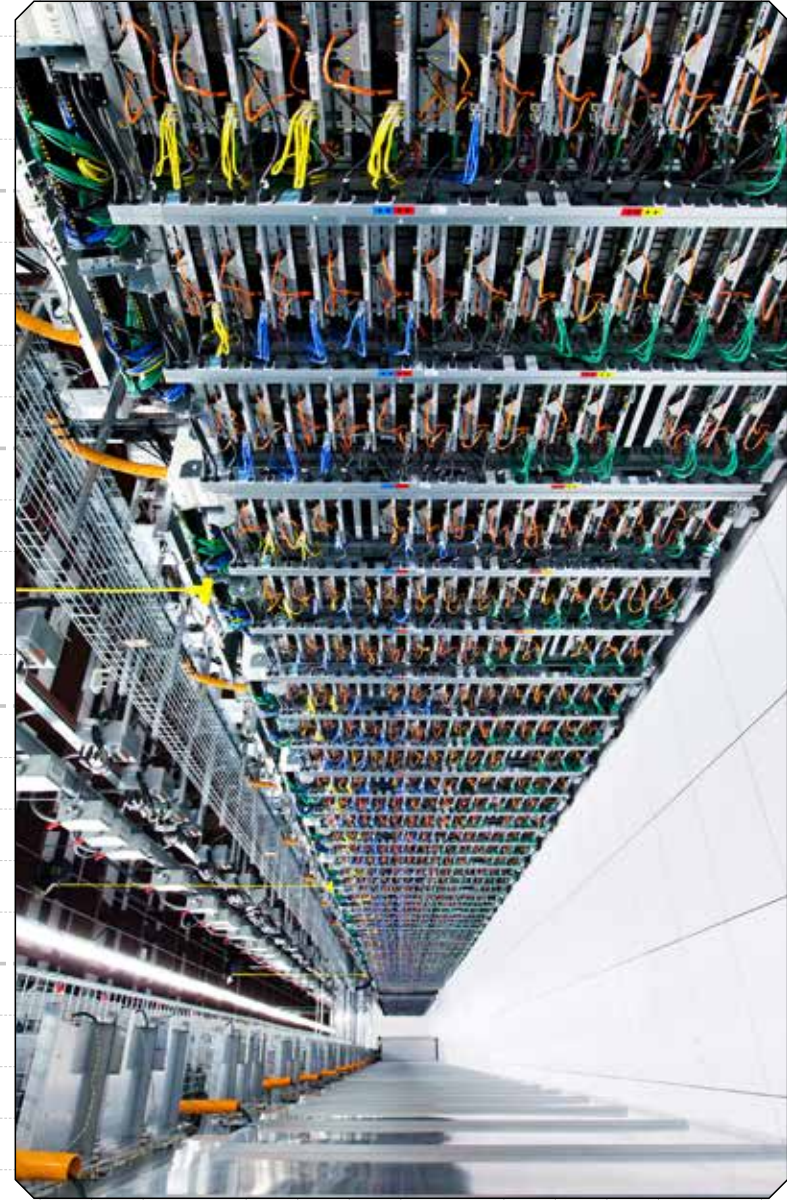
Description: FINAL QA					KEY
QA 09	Platform: RACK	Form Factor: MRACK	Machine Type: TLA	FAIL	
<b>GENERAL</b> <ul style="list-style-type: none"> <li>Parts must be in good condition</li> <li>High Attention to detail required</li> <li>Check for items left on top and inside rack</li> </ul>					
<b>CABLES</b> <ol style="list-style-type: none"> <li>Cables dressed with velcro</li> <li>Cables dressed with clips</li> <li>Ensure CAT Cable is plugged into correct ports.</li> <li>Blank cables properly capped and not hanging off shelves.</li> <li>Ethernet cables secure on battery shelf</li> <li>Power whip dressed and secured with straps</li> <li>Verify all ODFP cables are sealed by pushing on each connector</li> </ol>					
<b>COMPONENTS</b> <ol style="list-style-type: none"> <li>Verify shipping brackets are correct version and not damaged (WI 1011)</li> <li>(11) Redifiers are properly seated and (4) reciller blanks are secured with tape</li> <li>Verify slot configuration on each shelf. 4 side and 10 side shelves are installed.</li> <li>Stabilizers are raised up and capped</li> <li>Screen mesh secured</li> </ol>					
<b>LABELS</b> <ol style="list-style-type: none"> <li>Verify label placement (WI 0011)</li> <li>Verify all machine shelves have a &gt;240VA label</li> </ol>					
<b>QA Install</b> <ol style="list-style-type: none"> <li>Join shipping bumper (WI 1011)</li> </ol>					
					<b>PASS</b>

● Bloeien zonder CV

Material in Motion  
Innovation in supply chain services.



Voorbeelden  
IKEA model



**Bloeien zonder CV**



Material in Motion  
*Innovation in supply chain services.*



**Voorbeelden  
complexiteit**